

FALL 2018*Town Crier***EAST PETERSBURG BOROUGH****INSIDE THIS ISSUE:**

Mayor's Note	Cover
Borough Events	Page 2
Recycling updates	Page 3
Recycling updates cont.	Page 4
New Ordinances/ Trash dates	Page 5
MS4 - Homeowners Guide	Page 6
Lancaster Public Library	Page 7
Using your water meter to detect a leak	Page 8
East Pete Day Schedule	Page 9

**Fall Town Crier – Mayor's note**

We have had a fun and eventful Summer and now turn towards starting school, closing out summer and welcoming autumn.

We will be enjoying the Gypsy Moon Blues Festival and East Petersburg Days soon thanks to the East Petersburg Day Committee, their sponsors and their many volunteers.

Wednesday, Sept 5, 2018 6 pm - 9 pm, there will be a fundraiser for the East Petersburg Historical Society at Son's Ice Cream. Keep an eye out for their many talks and programs. It is a great way to learn more about our wonderful community's history.

Also, don't forget to reach out to East Petersburg Area Civic Center as another way to join the community in helping each other grow or just having some fun.

Remember all three organizations provide great opportunities to get involved in the borough community as a volunteer.

As I continue thinking on transitions, I want to be sure we remember those who often struggle.

"Life is pain, Highness. Anyone who says differently is selling something." - Man in Black; The Princess Bride (1987)

Life is also filled with moments of beauty, happiness, satisfaction, hunger, boredom, excitement, peace, joy, sorrow, gain, loss, learning, teaching and growing.

For many of our loved ones, our neighbors or even ourselves, these normal struggles or some extraordinary event can cause a spiral in thought and action that could lead to the act of suicide; taking one's own life.

You may not always feel that you can confide in the person nearest you, but talk to someone.

It doesn't matter if it is a friend, neighbor, community leader or someone at a national hotline like 1-800-273-TALK (8255). Please take the time to talk to someone if you are struggling with why you should keep living.

There is no single cause to suicide. It most often occurs when stressors exceed current coping abilities of someone suffering from a mental health condition.

If you see someone struggling or just seems off, please give them three minutes of your time. A short walk or standing for a cup of coffee while just hearing them out might keep them from taking their own life.

Here are some resources if you want to learn more.

NATIONAL SUICIDE PREVENTION WEEK

September 9 – 15, 2018

<https://afsp.org/campaigns/national-suicide-prevention-week-2018/>

American Foundation for Suicide Prevention

1-800-273-TALK (8255)

<https://suicidepreventionlifeline.org/>

The National Suicide Prevention Lifeline is a national network of local crisis centers that provides free and confidential emotional support to people in suicidal crisis or emotional distress 24 hours a day, 7 days a week. We're committed to improving crisis services and advancing suicide prevention by empowering individuals, advancing professional best practices, and building awareness.

At Your Service,
James Andrew Malone
Mayor

COUNCIL MEMBERS

Cathleen Panus, President
John Wolf, Vice-President
Adam Gochnauer, Member
Lauren Houck, Member
Connie McElwain, Member
John Schick, Member
Todd R. Weiss, Member
James A. Malone, Mayor
Robin Hemperly, Manager

MEETING DATESBorough Council Meeting

1st Tuesday of the month 7:00 p.m.

Planning Commission

3rd Thursday as needed 7:00 p.m.

Zoning Hearing Board

4th Wednesday as needed 7:00 p.m.

**EAST PETERSBURG
BOROUGH OFFICE**
6040 Main Street
East Petersburg, PA 17520
717-569-9282

Office Hours

8:00AM-4:30 PM

Monday Thru Friday

Closed for lunch 12:30-1:00



BOROUGH EVENTS

EAST PETERSBURG COMMUNITY PARK

6051 Pine Street



September 1 - Blues Fest held at East Petersburg Community Park

3:00 p.m. - 8:00 p.m.

<https://www.facebook.com/gypsymoonbluesfest/>

September 13 & 14 - Carnival in the Park begins at 6:00 p.m.

Wristbands are \$15.00 on 9/13

September 15 - East Pete Day begins at 8:30 a.m. with a 5K Race/Kid's Fun Run and continues throughout the day with numerous activities and entertainment, ending the day with fireworks at 9:30 p.m. Rain date is 9/16

**see back page for full schedule

October 6 - Pumpkin Fest 1:00 to 4:00 p.m. at the Community Park. Pumpkin decorating and hayrides. Rain or shine



October 31 - Trick-or-Treat 6:00 to 8:00 p.m.

November 3 - East Petersburg Fire Co. Pot Pie Take Out 10:00 a.m. until sold out, held at E.P. Fire Co.



November 6 - Election Day

polls will be open from 7:00 a.m. until 8:00 p.m.



Daylight savings time
ends November 4th
Fall Back

more info on events available at: <http://www.eastpetersburgday.com/>
&

Facebook page East Petersburg Day



East Petersburg Borough's Curbside Recycling List has been revised to the "BIG 4" in accordance with Lancaster County's Recycling Program

As we shared with you in the last Town Crier the current China restrictions on certain recycled commodities has brought to light a crisis within the U.S. recycling industry. Contamination is the recycling crisis, which has been occurring for several years. Confusion is the norm that led to contamination in the bin. People are often unsure as to what they can recycle; so they recycle "everything". The result is upwards of 20% of what is placed in the recycling bin is trash—and in some instances, contamination is even higher. Compounded with China's ban on mixed paper and mixed plastics (along with some other commodities), this crisis has necessitated an overhaul to recycling across the country.

Over the last few months, LCSWMA has been working toward a solution for Lancaster County that includes: simplifying the recycling process, standardizing the recycling message, and educating people through a campaign called "Recycle Right!".

Only the following materials can be recycled. Think of them as the "Big 4". Everything else should be placed in your trash. If you aren't sure, remember this phrase: "When in doubt, throw it out!" LCSWMA will transform discarded waste into renewable energy.

CORRUGATED CARDBOARD:

This includes any size material consisting of a fluted corrugated sheet, like shipping boxes, packing boxes, CLEAN pizza boxes (no grease or food remnants), etc. Flatten all boxes and remove packaging including styrofoam, peanuts, bubble wrap and plastic liners. Do NOT put paperboard (cereal boxes, shoe boxes), newsprint or junk mail in the bin.

PLASTIC BOTTLES AND JUGS:

This includes plastic bottles, jars, jugs and anything else with a neck. Throw away the lids and rinse out any residue. All other plastic material is considered trash. Ignore the numbers, as they don't indicate if something is recyclable. Do NOT put plastic bags, toys, buckets, packaging, styrofoam, hosing, furniture, or other plastic items in the bin.

METAL FOOD AND BEVERAGE CANS:

This includes all food and beverage cans made from aluminum or steel. Throw away the lids and rinse out any residue. Do NOT put metal hangers, cooking pots and pans or other scrap metal like foil and pie plates in the bin.

GLASS:

This includes clear, green and brown glass bottles and jars. Throw away the lids and rinse out any residue. Do NOT put light bulbs, dishes, glassware, window or automotive glass, vases or any other glass material in the bin.

These materials have a robust domestic market and are in strong demand; and we anticipate this to continue for the long-term. Please disregard any other materials list (including the one Penn Waste just released, if you received it). The "Big 4" is what LCSWMA believes to be the most appropriate for Lancaster County. No materials other than what's listed should be placed in the bin—when in doubt, throw it out and LCSWMA will transform the trash into renewable energy for our community.



Think these belong in your recycling bin?



Think again. So how do you know **what to throw?**

FOCUS ON THE
BIG 4
RINSE & PUT **ONLY**
THESE ITEMS IN BIN

1



CORRUGATED
CARDBOARD

2



PLASTIC BOTTLES
& JUGS W/NECKS

3



METAL FOOD &
BEVERAGE CANS

4



GLASS JARS
& BOTTLES



It's okay to throw *everything else* away. It will be turned into renewable energy.

Visit recyclerightlancaster.org for more tips.



NEWLY ADOPTED ORDINANCES:

ABANDONED MOTOR VEHICLES



ORDINANCE NO. 299 WAS ADOPTED TO ALLOW FOR THE REGULATION OF ABANDONED MOTOR VEHICLES, BOATS, TRAILERS AND RECREATIONAL VEHICLES AND TO RESCIND PERMITS FOR STORAGE OF ABANDONED VEHICLES. AN ABANDONED MOTOR VEHICLE/

TRAILER is any motor vehicle, boat, recreational vehicle or trailer which is found without the current year's registration, inspection, or identification markers as required by law, and has been continuously parked on public or private property for a period of 10 days, or is so disabled as to be incapable of being operated under its own power or is without one or more functioning tires.

SOLICITING IN EAST PETERSBURG BOROUGH

ORDINANCE NO. 298 ALLOWS FOR ADDITIONAL REGULATIONS FOR PEDDLING AND SOLICITING WITHIN THE BOROUGH. This Ordinance has increased the fees from \$5.00 to \$50.00 per person, per six (6) months. All persons soliciting must have a permit and it should be with them while soliciting. Non-profit organizations are exempt. There is a list of current soliciting permits on the Borough's website that lists the name of the company, person, and date that the permit expires. If someone puts literature on your door and does not knock or ring the bell, it is not considered soliciting.

Large Appliance and Tire pick-up will take place on October 26, 2018

You will need a special tag for these items to be picked up by the trash hauler.

Lg. Appliance tag - \$14.00 Tire tag - \$1.50

Do not store lg. appliances outdoors. This is considered a property maintenance violation.



Leaf Pick-up will take place

November 2, 16, 30

December 14

Trash collection will be the following

Saturdays instead of Friday due to the upcoming holidays:

September 8, November 24, and December 29



MS4

Fall leaves seem harmless....
but, they can cause damage to our waterways.
For tips on how to handle leaves and other
negative impacts of stormwater runoff from your
property click on the title of the booklet cover below.

Homeowners Guide to Stormwater BMP Maintenance

What You Need to Know to Take Care of Your Property



About Stormwater Management
SW **Regulations** for Homeowners
Home Stormwater **BMP Descriptions**

Pages **1 - 4**
Pages **5 - 6**
Pages **8 - 22**



LANCASTER PUBLIC LIBRARY

250 YEARS OF LIFELONG LEARNING

Lancaster Public Library

125 N. Duke Street, Lancaster

717-394-2651 or www.lancasterpubliclibrary.org

Monday–Thursday: 10AM –8PM

Friday–Saturday: 10AM –5PM

Sunday: Closed



Lapsit Storytime. Most Wednesdays & Thursdays at 10:30 a.m.



Family Movie Night. First Tuesday of the month at 6:00 p.m.



STEM Night. Fourth Monday of the month at 6:00 p.m.



Coder Dojo. Fourth Tuesday of the month at 6:30 p.m.



Introduction to Finding Grants for Nonprofits. Tuesday, September 25, 6:00 p.m.



The Night Circus. Wednesday, September 26, 6:00 p.m.



Are You Smarter than a Librarian: Battle of the Decades, Tuesday, October 11, 6:30 p.m. at Tellus 360.



Fall ReSort Book Sale. October 12-14 at the Marshall Street Book ReSort Center.



The Business of Art. Wednesday, October 17, 2:00 p.m. AND 6:30 p.m.



6th Annual Haunted Library. Friday, October 26, 6-8:30 p.m.



Friends of Lancaster Public Library 4th Annual Baubles & Bling Sale. November 1-3 at the Lancaster Public Library.



Build your Family Tree: A Genealogy Workshop. Monday, November 5, 11:00 a.m. - 12:30 p.m.



Thursday Book Group. Thursday, November 8, 10:00 a.m.

To register for any of the above programs, to see the library's entire calendar of events and/or learn more About the Lancaster Public Library please visit our website at <https://lancasterpubliclibrary.org/>

The Lancaster Public Library inspires, empowers, and strengthens our community by connecting people with information, ideas, and enriching experiences





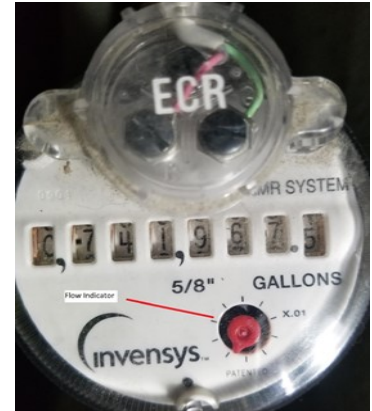
**If you suspect you have a water leak,
checking the reading on your water meter could help.
Water leaks can be very costly and cause property damage.
Additionally, leaks can result in very large water bills.
Find the meter below that is installed in your home to detect signs of a leak.**

Using your older Sensus SRII water meter to detect a leak

Make sure no water is being used inside or outside of your house.

Locate your water meter and check the leak indicator to see if it is moving. Many meters have a small red triangle or dial on the meter face, designed to detect even small leaks. If this indicator is moving when you have all water off inside and outside your home, you may have a leak.

Or, you can also take a meter reading and wait 1 to 2 hours and take another meter reading (make sure no water is used during this time).



Using your Sensus IPERL water meter to detect a leak

Your Sensus IPERL™ water meter is equipped with a digital LCD register. A plus sign (+) means water is flowing through the meter. If you suspect you have a leak, take the following steps:

1. Write down the meter reading
2. Turn off all the water fixtures and appliances
3. Write down the reading again on the meter
4. Wait approximately 15 minutes
5. Look at the flow indicator, does the plus sign (+) disappear or remain
 - A. If the plus sign (+) disappears then the flow of water through the meter stopped
 - B. If the plus sign (+) remains then a fixture in your home is still using water or you have a leak in your service line between the meter and your home.



THURSDAY, SEPTEMBER 13TH
WRISTBAND NIGHT!! \$15.00 UNLIMITED RIDES ALL NIGHT!

6:00 P.M. - CLOSE
DJ/KARAOKE
6:30 P.M. - 8:30 P.M.

FRIDAY, SEPTEMBER 14TH
RIDES AND CARNIVAL GAMES

6:00 P.M.
"BIG BIG JAZZ BAND"
6:30 P.M.—8:30 P.M.

SATURDAY, SEPTEMBER 15TH:
ALL DAY ACTIVITIES, ENTERTAINMENT, MUSIC, AND FOOD

8:30 A.M. Kid's Fun Run
9:00 A.M. Totally 80's 5K Run/Walk
10:00 A.M. Parade Begins
11:00 A.M. Food Sales & Rides Begin
11:00 A.M. Opening Ceremony
2:00 P.M. Hula Hoop Contest
3:00 P.M. Whoopie Pie Contest - adults & kids
6:00 P.M. Golf Ball Drop
9:30 P.M. Fireworks!!!!!!

*** ENTERTAINMENT ACTS THROUGHOUT THE DAY INCLUDE —**
11:30 Magician, 2:30 Pulse Dance Studio Performance, 3:45
X2 Acoustic Music that Rocks, 6:30-9:30 Pocket Full O' Soul