

EAST PETERSBURG BOROUGH

INSIDE THIS ISSUE:

Mayor's Note	Cover
Borough Events	Page 2
2021 Trash/Recycling info	Page 3
HHW Waste Drop off	Page 4
Virtual Tour LCSWMA	Page 5
Snow & Ice Removal	Page 6
Snow Emergency Routes	Page 7
Using De-Icer	Page 8
Checking for Water Leaks	Page 9
Pest Alert!	Pages 10 & 11



Winter Town Crier – Mayor's note

I started my residency in East Petersburg Borough in November 2011. My first week in the borough, I had two neighborhood families drop off "Welcome" packages, a new vacuum delivered and stolen from my front porch, a warm "Welcome" from the borough office and mayor and a neighbor threaten to report me to the borough due to the height of my grass just as my lawn crew was pulling up to help me get my property into a presentable state. All in all, it was a mixed bag of experiences. I am very thankful for them, the positive and the negative, because they highlight to me a thriving community trying to figure itself out and blossoming together into something new every day. The ineffectual is cut out or repurposed in a positive manner and new ways are tested be it for growth, productivity or heightened sense of community. That struggle to build up in a positive manner rather than tear down or bunker in place, is something I see frequently in our borough and I am proud of each of you for it.

It is easy, of course, to find negative experiences in our physical lives, on social media, and other places, folks pushing some ultimatum or another to ignore facts, to put themselves above all others, to refuse to advocate for themselves and their families, to disregard or belittle someone not doing as well as they are or who doesn't follow the same social-cultural norms as they do. These are as commonplace as those who gloss over everything with a broad brush of optimism and escapism.

What I truly love about our borough is seeing it consistently come back out of those negative pendulums of personality to do right by one another. Even listening to stories where it took decades for folks to work things out in our community, the root fact is they did work it out.

You, my neighbors, tend toward being responsible, neighborly, caring, compassionate and productive. Thank you for that.

As we track through winter, closing out 2020 and starting 2021, we know a lot of our current situation will continue. Acknowledging this, please keep one another in mind. Our lives are worth living. We prove that by doing what we can to positively impact the world around us starting with our families and our communities.

Knowing this, I wish you well and whatever your winter celebrations are, I hope you find safe and healthy ways to celebrate them with your families.

- Happy Hanukkah (Dec. 10 - 18)
- Blessed Winter Solstice (Dec 20)
- Merry Christmas (Dec 25)
- Good Kwanzaa (Dec 26 - Jan 1)

Whatever I missed - Enjoy!

Finally, I know everyone is adjusting to a lot more than we ever expected to this time last year. If you are in need of resources or guidance on helping or getting help within the borough, let us know or visit the borough website at :

<https://www.eastpetersburgborough.org/>

James Andrew Malone, Mayor
East Petersburg Borough
email mayor@eastpetersburgborough.org
voice mail 717-569-9282 ext. 50

COUNCIL MEMBERS

Cathleen Panus, President
John Wolf, Vice-President
Adam Gochnauer, Member
Lauren Houck, Member
Debra Miller, Member
John Herr, Member
William T. Pfautz, Jr., Member
James A. Malone, Mayor
Karen St. Clair, Manager

MEETING DATES

Borough Council Meeting
1st Tuesday of the month 7:00 p.m.

Planning Commission
3rd Thursday as needed 7:00 p.m.

Zoning Hearing Board
4th Wednesday as needed 7:00 p.m.

Committee Meeting
4th Thursday of the month Jan.-Oct.

**EAST PETERSBURG
BOROUGH OFFICE**
6040 Main Street
East Petersburg, PA 17520
717-569-9282
Office Hours
8:00AM-4:30 PM
Monday Thru Friday
Closed for lunch 12:30-1:00



BOROUGH EVENTS



January 31 New Years Celebration 6:30 - 9:30 p.m. Music in the Park by One Too Many, along with family friendly activities to bring in the new year. The Jug will be dropped from East Petersburg Fire Truck followed by FIREWORKS! Food vendors will be available.



January 9 Tree Chipping at East Pete Park 8:00 to 2:00 p.m. You can sign up at the borough office to have your tree picked up at the curb by the Boy Scouts or you can drop it off at the park.



February 6 Pot Pie Take-out
Held at East Petersburg Fire Dept. 9:00 a.m. until sold out!

For more information and updates on events go to:
<http://www.eastpetersburgday.com/> &
Facebook page East Petersburg Day



2021 Trash and Recycling

RECYCLING & TRASH CHANGES

SATURDAY, JANUARY 2

SATURDAY, JUNE 5

SATURDAY, SEPTEMBER 11

SATURDAY, NOVEMBER 27

LARGE APPLIANCE AND TIRE PICK-UP WILL TAKE PLACE

APRIL 30

OCTOBER 29

THE FOLLOWING ITEMS ARE SOLD AT THE BOROUGH OFFICE

\$ 15.00 - APPLIANCE TAG

\$ 5.00 - TIRE TAG

\$.50 - YARD WASTE/LEAF BAGS

\$ 1.25 - TAGS FOR EXTRA BAGS OF TRASH (ANYTHING OVER 3 - 32 GAL)

\$ 2.00 - TAGS FOR GRASS

\$ 10.00 - RECYCLING BINS

YARD WASTE PICK-UP

APRIL 2

APRIL 16

APRIL 30

MAY 14

MAY 28

JUNE 11

JUNE 25

JULY 9

JULY 23

AUGUST 6

AUGUST 20

SEPTEMBER 3

SEPTEMBER 17

OCTOBER 1

OCTOBER 15

LEAF PICK-UP

OCTOBER 29

NOVEMBER 12

NOVEMBER 27

DECEMBER 10

Please Remember: Do not put items out earlier than 5:00 p.m. the evening before scheduled pick-up. All items should be kept out of the right-of-way. Containers must be picked up no more than 24 hours after collection.

ITEMS TO BE PUT INTO THE RECYCLING BIN

"The Big 4"

- Plastic jugs and bottles with a neck
- Glass bottles and jars includes clear, green and brown
- Cans- includes food and beverage cans made from aluminum or tin
- Corrugated cardboard-flattened (there is a dumpster at the Community Center for cardboard that does not fit into your bin)

REMOVE LIDS (PUT THEM INTO THE TRASH), ITEMS MUST BE EMPTIED AND RINSED, FLATTEN CARDBOARD, ALL ITEMS BEING RECYCLED SHOULD BE PLACED INTO BINS. HEAVIER ITEMS SHOULD BE ON TOP.

NO OTHER MATERIALS THAN LISTED.

NO PLASTIC BAGS IN THE RECYCLING BINS and NO RECYCLING IN PLASTIC BAGS

RESIDENTIAL HAZARDOUS WASTE

The following materials are accepted from Lancaster County residents at the HHW Facility:

- Adhesives
- Automotive fluids (max. 5 gallons per container)
- Batteries, including automotive and household
- Chemistry sets
- Cooking and frying oils (max. 5 gallons per container)
- Fire extinguishers
- Floor and furniture polish
- Fuel, including kerosene, gasoline and propane
- Household cleaners
- Iodine
- Lawn treatments, including herbicides and pesticides
- Mercury containing items (max of 30 per month), including ballasts, fluorescent bulbs, thermostats and thermometers
- Paint, rust inhibitors, stains, turpentine and thinners
- Photographic and pool chemicals

BUSINESS HAZARDOUS WASTE

The following hazardous waste is accepted at the HHW Facility from small businesses in Lancaster County (they do not accept items from institutions, industries, or manufacturers):

- Batteries
- Covered devices (see ELECTRONIC WASTE)
- Fluorescent bulbs (max of 30 per month)
- Important Reminders:
- Empty containers, from paint and other items that previously contained liquids, are not accepted and may be disposed of as regular trash.

ELECTRONIC WASTE

The following e-waste materials will be accepted from Lancaster County residents and businesses for FREE at the HHW Facility, with a limit of 10 items per customer, per day:

- Desktop computers
- Laptops
- Monitors
- Computer peripherals, including a keyboard, mouse, printer and speakers
- Televisions
- e-Readers that browse the internet
- Cameras: photo and video
- Cell phones, smart phones and peripherals: chargers, batteries, Bluetooth earpieces, air cards, clips, cases
- DVD and VCR players
- MP3 players and iPods
- PDA's
- Portable electronic game players and video game consoles
- Stereos and peripherals: CD players, turntables, amplifiers, speakers (no wooden materials)

All electronics must be intact and will not be accepted otherwise.

LCSWMA - HHW Facility is located at 1299 Harrisburg Pike, Lancaster, PA 17603 Ph.717-397-9968
Monday through Friday 6:00 a.m. to 4:00 p.m.; Saturday 7:00 a.m. to 11:00 a.m.; Sunday closed
For a list of additional facilities that accept e-waste materials, visit www.earth911.com



TAKE A VIRTUAL TOUR OF LCSWMA!

<https://www.virtually-anywhere.net/tours/lcswma/tsc/vtour/index.html>



WASTE TO ENERGY FACILITY



TRANSFER STATION COMPLEX

HELP KEEP OUR FRONTLINE WASTE WORKERS SAFE

Wear a Mask

When visiting LCSWMA facilities, please wear a mask to keep yourself and our staff safe.



Properly Dispose of Personal Hygiene Products

Items such as used tissues, paper towels, sanitary wipes, face masks, gloves or similar items should be disposed of in plastic garbage bags.

Please securely tie all garbage bags before placing in trash cans for disposal.



Sanitize Trash Can Lids and Handles

By wiping down with a disinfectant, you can help minimize the danger of shared surface areas.



Waste from a Sick Person Should be Treated Differently

If you are sick at home or caring for someone who is sick, make sure all household waste is **DOUBLE-BAGGED** in plastic garbage bags and placed in trash bins.



Safely Dispose of Sharps (Needles)

As always, items such as sharps (needles) should be placed in a puncture-resistant container like a metal coffee can or laundry detergent bottle. Tape the lid closed and dispose with your regular trash.

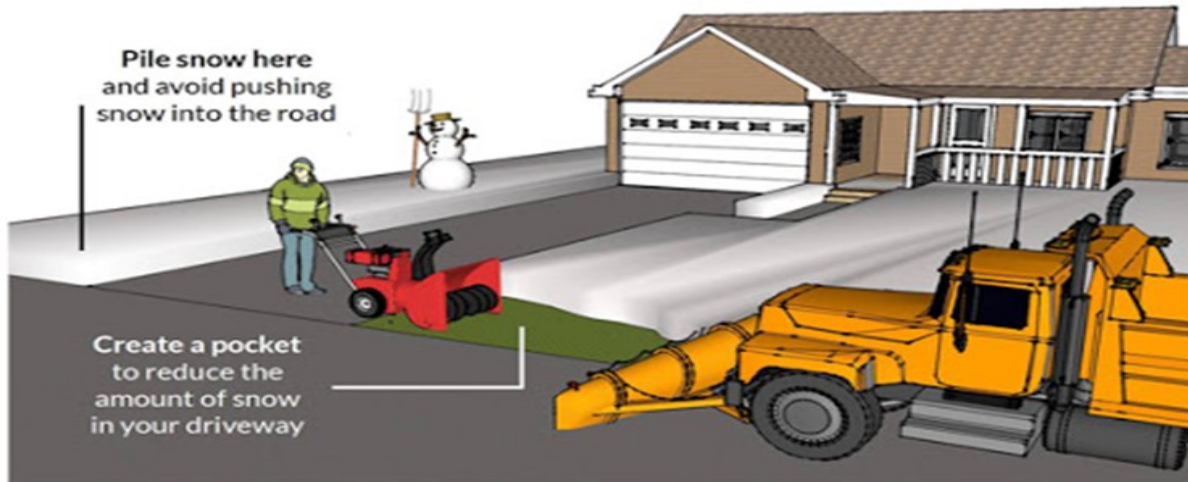




Snow and Ice Removal

How Can I Keep Snow Out of my Driveway?

Before your street has been plowed, we recommend the following:



Using this method to clear snow will reduce the amount of snow that accumulates at the end of your driveway!

- * Property owners are required to remove and clear away any snow and/or ice from sidewalks abutting their properties within twelve (12) hours after the finishing of any snow, sleet, or freezing rain event.
- * At all times during and after any snow storm, it shall be prohibited for any person to shovel, push, throw, or plow snow from a sidewalk, driveway, lot, or any other area on any Borough public street.
- * If any sidewalk is not cleared of snow and/or ice in accordance to the provisions, residents may complete a complaint form that can be found online or at the Borough office.

For information on making an emergency plan for your home, vehicle and workplace go to:

<https://www.penndot.gov/TravelInPA/Winter/Pages/Winter-Preparation>



Snow Emergency Routes

Remember to move your car if a snow emergency is declared on the streets listed below. Failure to do so could result in fines or the owners vehicle being towed.

If the Borough declares a snow emergency, information will be given on the local TV news channels and on the website. More information on the snow emergency ordinance can be found at www.eastpetersburgborough.org

Valley Road	Stevens Street
Northfield Drive	Morris Drive
Hollow Drive	Broad Street
New Street	Madison Court
Franklin Drive	Olde Meadow Court
Caroline Drive	Linden Street (North side only)



Please Note: Parking is available at the pool parking lot and at the parking lot on Hollow Drive near the basketball courts.

Your patience and cooperation is appreciated as we do our best to stay on top of the changing road conditions. Please stay clear of the plows as they work to keep the roadways safe and clear to allow emergency vehicles to get to where help is needed.

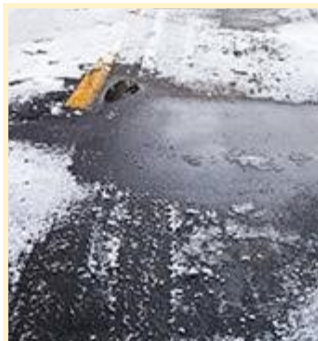
WINTER MAINTENANCE: DE-ICING

On average, the equivalent of 137 pounds of salt per person is used to melt ice each winter in the U.S. Unfortunately, excess de-icing material ends up in our rivers and streams, where it can harm aquatic life and kill trees and other plants. Once chloride is in the water it cannot be removed. Therefore, prevention is the only way to keep our water clean. Thankfully, there are options that are less harmful to our waterways.

Using de-icer's sparingly on your sidewalks, driveways, and parking lots can help reduce the amount of harmful chemicals in the environment.



Shoveling your sidewalk or driveway before using deicer is better for the environment and your wallet.



Excess rock salt on the road will get washed into nearby waterways if not cleaned up.

Keep in Mind



Remove snow first. Always remember to shovel, snow blow, and/or plow first to remove snow and ice as it builds up. Then, apply a deicer only if needed, and in as little an amount of necessary.



Use deicer sparingly. More than necessary will not be more effective. Use less than four pounds of salt per 1,000 square feet (average parking space is 150 square feet). One pound of salt equals a 12-ounce coffee cup.



Choose sand for low temps. Typical deicers won't melt snow and ice effectively when it's 15 °F or colder out, so use some sand for traction instead.



Don't be wasteful. Salt and sand on dry pavement will eventually get washed into a nearby waterway. Before that happens, sweep it up and save it for use later.

Choose Deicer Wisely:

Magnesium chloride, calcium chloride, and potassium acetate work better in colder temperatures. Blends usually contain a lot of sodium chloride because it is cheap, but less effective the colder it gets. Urea is marketed as pet or plant friendly, but is much less effective at melting ice.



Use your water meter to check for leaks

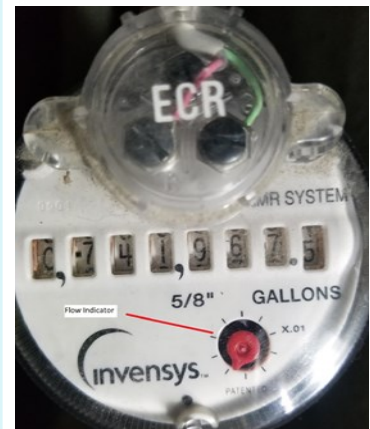


If you suspect you have a water leak.....checking the reading on your water meter could help. Water leaks can be very costly and cause property damage. Additionally, leaks can result in very large water bills. Find the meter below that is installed in your home to detect signs of a leak. Being proactive can save you money in the long run.

Sensus SRII water meter (older model)

Make sure no water is being used inside or outside of your house. Locate your water meter and check the leak indicator to see if it is moving. Many meters have a small red triangle or dial on the meter face, designed to detect even small leaks. If this indicator is moving when you have all water off inside and outside your home, you may have a leak.

Or, you can also take a meter reading and wait 1 to 2 hours and take another meter reading (make sure no water is used during this time).



Sensus IPERL water meter

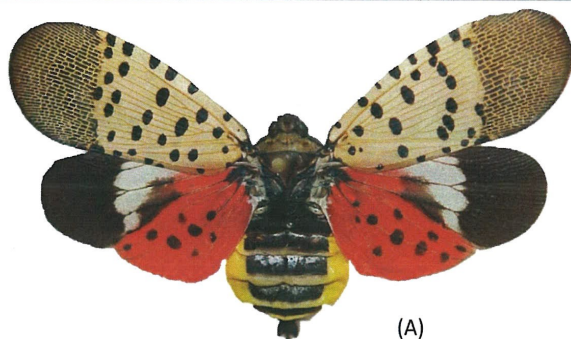
Your Sensus IPERL™ water meter is equipped with a digital LCD register. A plus sign (+) means water is flowing through the meter. If you suspect you have a leak, take the following steps:

1. Write down the meter reading
2. Turn off all the water fixtures and appliances
3. Write down the reading again on the meter
4. Wait approximately 15 minutes
5. Look at the flow indicator, does the plus sign (+) disappear or remain:
 - A. If the plus sign (+) disappears then the flow of water through the meter has stopped.
 - B. If the plus sign (+) remains then a fixture in your home is still using water or you have a leak in your service line between the meter and your home.





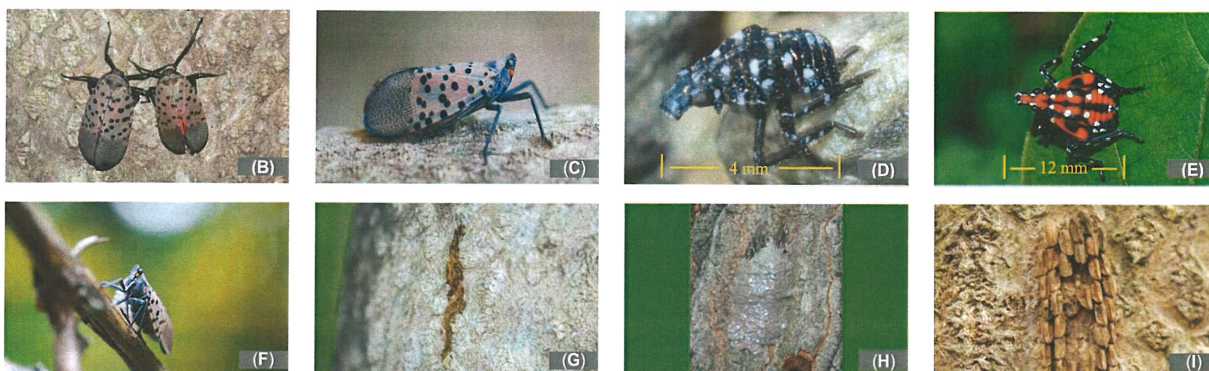
Pest Alert



Spotted Lanternfly

Lycorma delicatula (WHITE)
(Hemiptera: Fulgoridae)

The spotted lanternfly, *Lycorma delicatula* (White), an invasive planthopper, was first discovered on September 22, 2014 in eastern Berks County, Pennsylvania. It is native to China, India, Vietnam, and was unintentionally introduced to Korea where it has become a major pest. This insect prefers to attack tree of heaven, but it will feed on many other host plants including grapes, apples, stone fruits, and has the potential to greatly impact the grape, fruit tree, and forest products industries. Early detection is vital for the protection of Pennsylvania businesses and agriculture.



(A) Spotted lanternfly adult showing the forewings and hind wings (B) Adults at rest on bark (C) Lateral view of an adult (D) 1st instar nymph (E) 4th instar nymph (F) Adult feeding on wild grape, *Vitis* sp. (G) Weeping sap trail on bark (H) Egg mass (oothecum) covered in coating (I) Old hatched egg mass on tree trunk.

Identification:

The spotted lanternfly adult is approximately 1" long and 1/2" wide at rest. The forewing is gray with black spots and the wing tips are reticulated black wings outlined in gray (A, B, C). The hind wings have contrasting patches of red and black with a white band (A). The legs and head are black; the abdomen is yellow with broad black bands. Young nymphs are black with white spots, and in the last (4th) instar develop red patches (D, E).

Hosts:

In the fall, adults congregate on tree of heaven (*Ailanthus altissima*), willows (*Salix* spp.), and other trees in groups of up to 20. Egg masses are laid on the trunk and branches of medium to large trees. After hatching in the spring, nymphs will move off the tree and search out new hosts, including several kinds of agricultural crops. In Korea, it has been reported to attack 65 different tree species, 25+ of which are known to grow in Pennsylvania.

Symptoms and Signs:

Trees, such as tree of heaven and willow, will develop weeping wounds. These wounds will leave a grayish or black trail along the trunk (G). This sap will attract other insects to feed, notably wasps and ants. In late fall, adults will lay egg masses on host trees and nearby smooth surfaces like stone, outdoor furniture, vehicles, and other structures. Newly laid egg masses have a gray mud-like covering that can take on a dry cracked appearance over time (H). Old egg masses appear as rows of 30-50 brownish seed-like deposits in 4-7 columns on the trunk, roughly an inch long (I).

What to do:

If you see egg masses, scrape them off, double bag them and throw them away. You can also place the eggs into alcohol or hand sanitizer to kill them. Please report all destroyed egg masses on our website listed below.

Collect a specimen: Specimens of any life stage may be submitted to the Pennsylvania Department of Agriculture's Entomology Lab for verification. Directions for submission are on the reverse side of this alert.

Take a picture: A photograph of any life stage (including egg masses) can be submitted to Badbug@pa.gov.

Report a site: If you can't take a specimen or photograph, call the Automated Invasive Species Report Line 1-866-253-7189 and leave a message detailing your sighting and contact information.



pennsylvania
DEPARTMENT OF AGRICULTURE

ENTOMOLOGY PROGRAM SAMPLE SUBMISSION FORM

*The Entomology Program at the Pennsylvania Department of Agriculture can provide identification.
Please complete this form to be submitted with the specimen(s).*

SPECIMEN COLLECTION REQUIREMENTS:

1. All specimens should be dead.
2. Most specimens should be placed in 70-80% ethyl or isopropyl alcohol in a leak proof vial.
(Moths, butterflies, and mealybugs should be frozen and placed in a hard plastic container with dry paper toweling)
3. The leak proof vial should be placed in a zip-style plastic bag.
4. Specimens from different locations (if applicable) should be placed in different vials.
5. A completed sample submission form must accompany the vial/container.

REQUIRED INFORMATION:

Name of Submitter: _____

Contact Information: Telephone: _____

Email: _____

Address Where Specimen Was Collected: _____

Date Collected: _____

Plant Host/Habitat: _____

Name of Person Who Collected Specimen: _____

Comments/Special Instruction: _____

Mail the vial/container and completed form or deliver in person to:

Pennsylvania Department of Agriculture
Entomology - Room 111
2301 North Cameron Street
Harrisburg, PA 17110

Contact: Sven-Erik Spichiger at 717-772-5229 or Lawrence Barringer at 717-772-5228