



EAST PETERSBURG BOROUGH

INSIDE THIS ISSUE:

Mayor's Note	Cover
Borough Events	Page 2
Trash/Recycling	Page 3
Prevent Water Loss	Page 4
Grass clippings / MS4	Page 5
East Pete Pool	Page 6
Playground	Page 7
Tree Maintenance	Page 8
Pest Alert!	Pages 9 & 10

COUNCIL MEMBERS

John Wolf, President
 Debra Miller, Vice-President
 Adam Gochnauer, Member
 Lauren Houck, Member
 John Herr, Member
 Randy Rannels, Member
 John Schick, Member
 James A. Malone, Mayor
 Karen St. Clair, Manager

MEETING DATES

Borough Council Meeting
 1st Tuesday of the month 7:00 p.m.
Planning Commission
 3rd Thursday as needed 7:00 p.m.
Zoning Hearing Board
 4th Wednesday as needed 7:00 p.m.
Committee Meeting
 4th Thursday of the month Jan.—Oct.

There is an open seat on the Planning Commission. If you are interested, submit a letter of interest to the Borough office.

**EAST PETERSBURG
 BOROUGH OFFICE**
6040 Main Street
East Petersburg, PA 17520
717-569-9282
Office Hours
8:00AM-4:30 PM
Monday Thru Friday
Closed for lunch 12:30-1:00



Spring Town Crier – Mayor's note



Hello, neighbor,

I was reviewing my note to you from March 2020. It feels like a lot more than a year since then.

If you are like me, you are still wrapping your mind around the many unexpected firsts in a century. Additionally, you are doing everything in your power to adjust to a new reality where the health and welfare of loved ones, friends and neighbors requires a conscious effort on your part. Perhaps it has been far too long since the real impact our day to day behavior has on others in our world has been so explicitly tangible.

During this forced review and assessment of our everyday activities, I am thankful that you have chosen to continue to invest in yourself, your family, and our community to the best of your ability. The borough is better for it.

SPRING is drawing closer!

Whatever Spring traditions you celebrate, I hope they are done in good health and safety.

Last year (2020) all PICK UP PENNSYLVANIA events were cancelled. Perhaps with what we've learned, the practices we've put in place and the vaccinations ongoing, we'll be able to join each other in this endeavor this year. <http://www.gacofpa.org/> This is a program of Keep Pennsylvania Beautiful, supporting the national Great American Cleanup initiative. We also have the "RESTORE OUR EARTH™ EARTH DAY 2021" (<https://www.earthday.org/earth-day-2021/>) programs later in April.

Election 2021:

I will be running for re-election. I hope I can count on your vote.

The next primary election is on May 18, 2021.

- Polls are open on election day from 7 A.M. - 8 P.M.

Last day to register to vote: May 3, 2021

- Last day to request a mail-in or absentee ballot: May 11, 2021

Learn about primary elections.

The next municipal election is on November 2, 2021.

- Polls are open on election day from 7 A.M. - 8 P.M.
- Last day to register to vote: October 18, 2021
- Last day to request a mail-in or absentee ballot: October 26, 2021
- Learn about municipal elections.

Everyone could use your help at the polls too.

Visit these three sites to learn more. Lancaster Co Election Information (<https://www.co.lancaster.pa.us/299/Election-Information>), Lancaster Co Democratic Party (<https://www.lancasterdems.com/>), and Lancaster Co Republican Party (<https://lancasterrepublicans.com/>).

Keep busy, keep talking to each other, be ready for and willing to change.

I hope to see you soon.

James Andrew Malone, Mayor
 East Petersburg Borough
 email mayor@eastpetersburgborough.org
 voice mail 717-569-9282 ext. 50



BOROUGH EVENTS

For more information and updates on events go to:

<http://www.eastpetersburgday.com/> &

Facebook page East Petersburg Day



May 1 Vagabonds Car Show held at East Petersburg Park

11:00 a.m. until 3:00 p.m.

Great Food, Live Music, a Chinese Auction (100% of proceeds go to Hospice) and lots of awesome cars! And to top the night off, there will be a firework show in the park!!

(1st Rain Date-May 2 - 2nd Rain Date-July 31)

[Registration Form](#)



May 8 Throwing Bull Tribe Chicken BBQ held at the Community Center

11:00 a.m. until sold out



May 18 Election Day

Polls will be open from 7:00 a.m. until 8:00 p.m.

**Daylight savings time begins March 14-
spring ahead!**





Trash and Recycling



SPRING YARD WASTE PICK UP:

Friday April 2
Friday April 16
Friday April 30
Friday May 14
Friday May 28
Friday June 11

TRASH PICK UP SCHEDULE CHANGE:

Saturday June 5, due to holiday

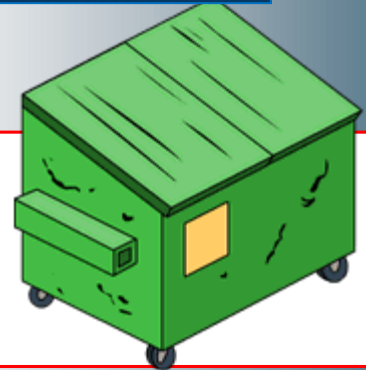
LARGE APPLIANCE AND TIRE PICK-UP:

Friday April 30

Lg. appliance tag: \$15.00

Tire tag: \$5.00

Before you order a dumpster for spring cleaning, you will need a permit for all dumpsters on your property.



Commercial, Industrial, Public & Multi-Family Units Recycling Requirements



Pennsylvania Act 101 and East Petersburg Borough Ordinance 232 requires all commercial, industrial, public (schools), community events and multi-family units to recycle. Act 101 also requires municipalities to track and report “post-consumer” recyclables that have been collected and marketed, such as clear & colored glass, aluminum, steel & bi-metallic cans, corrugated cardboard, plastic jugs & bottles, yard waste, leaves, tires and white goods.

For commercial, industrial, and public schools annual proof of collection is required and an Annual Recycling Report is due to the Borough each year.

Residential units are included in the Borough’s collection program and do not have to report this information.



Tips to Prevent Water Waste



Toilet Leak Test

Step 1 Remove the tank lid

Step 2 Place 10 drops of food coloring inside the tank

Step 3 Replace lid, do not flush until morning

Step 4 Check the next morning. If the food coloring shows up in the water in the toilet bowl, you have a leak.



- ◇ Replace older toilets with efficient water saving toilets.
- ◇ Check your faucets, pipes, and couplings for leaks.
- ◇ Check outdoor water connections and hoses for leaks.
- ◇ Fill your sink to wash dishes instead of letting your water run.
- ◇ Watering your lawn and gardens in the early morning is best. Mid-day watering will cause rapid evaporation, and evening watering causes droplets to cling to vegetation overnight, increasing the chance of fungal disease.
- ◇ Only use your dishwasher when it is a full load.
- ◇ Don't let your water run while cleaning your fruits and vegetables.
- ◇ Repair small leaks around water heaters, refrigerators, dishwashers, and other appliances before they become a problem.
- ◇ Use a bucket when washing your car and turn the hose off.
- ◇ Putting a layer of mulch around your plants and trees will slow evaporation and hold moisture in longer.
- ◇ Use a broom to clean your sidewalks and driveways, instead of a hose.
- ◇ Take shorter showers.
- ◇ Plant drought resistant plants and trees.
- ◇ Install water-saving showerheads or flow restrictors.
- ◇ Don't let the water run while brushing your teeth.
- ◇ When bathing, only fill the tub halfway or less.
- ◇ Chill drinking water in the refrigerator instead of running water until it gets cold.

Water Quality (MS4) & Grass Clippings

When lawn clipping, fertilizers, soil, leaves or animal wastes are picked up by storm water runoff, they are carried directly to our local streams and tributaries. All of these materials, including grass clippings, contain phosphorus. According to the U.S. Environmental Protection Agency (EPA), phosphorus is one of the most troublesome pollutants in storm water runoff and it is considered the primary cause of water quality problems in our rivers, creeks, and streams, and other aquatic habitats.

Grass clippings contribute nutrients such as nitrogen and phosphorus, which cause unwanted and uncontrolled growth of algae and aquatic weeds in the waterways. Increased algae growth is observed as green algae blooms or “scums” on lakes and ponds.

Too much algae is harmful to aquatic habitats. It blocks sunlight and prevents other plants from growing. When it dies and decays, it also takes much needed oxygen away from fish. Limiting phosphorus reduces algae blooms. One bushel of fresh grass clippings can contain 0.1 pounds of phosphorus, which if it ends up in lakes or ponds is enough to produce 30 to 50 pounds of algae.

When mowing your yard, make certain you do not blow grass clippings into the street. If there are grass clippings on the street or sidewalk, use a broom or leaf blower to put them back onto the lawn.

Keeping grass and leaves out of the waterways will have significant benefits for your local water ways.

Lawn clippings blown into the street by the homeowner and not cleaned up is considered illicit discharge and is a finable offense.





Summer Pool Memberships will go on SALE April 1 thru April 30. Sign up early to get \$10 off regular membership fees. Two pools for the price of one: East Pete Pool & Hempfield rec-Center. Membership begins May 29, 2021

SALE April 1–April 30

(includes 2 pool passes and 2 fitness passes)

Single \$155 resident/\$175 nonresident

Couple \$225 resident/\$245 nonresident

Family (up to 4 people) \$270 resident/\$290 nonresident

Senior (age 62+) \$95 resident/\$115 nonresident

REGULAR PRICE beginning May 1

(includes 2 fitness passes)

Single \$165 resident/\$185 nonresident

Couple \$235 resident/\$255 nonresident

Family (up to 4 people) \$280 resident /\$300 nonresident

Senior (age 62+) \$105 resident/\$125 nonresident

*Additional family members \$35 per person.

For more information contact **HARC 717-898-3102**



2021 Summer Playground

It's the 43rd year!

This supervised program is held at four neighborhood parks:
Amos Herr Park – East Hempfield Township, Silver Spring Park, West Hempfield Township, **East Petersburg Park**, and Mountville Community Park.

This popular program offers supervised outdoor play, games, sports, and *optional field trips and pool parties.

Offered for eight weeks during summer break:

June 14 thru August 6, Monday—Friday 9:00 a.m.- 3:30 p.m. Ages 6-13

*Field trips and pool parties as well as the number of participants are contingent upon COVID/CDC guidelines.

Detailed information will be released on March 15th on the hempfieldrec.com website.

For more information, contact Cristine Maser, Program Director
cmaser@hempfieldrec.com or 898-3102 ext. 139.

Registration opens on April 1st. Forms can be printed from hempfieldrec.com but must be completed and mailed or dropped off. No phone or online registrations. [Summer Playground Info.](#)

****Sign up early to ensure East Pete Park will be one of the locations.**

Tree Maintenance

Per Ordinance 284 – All branches must be trimmed so that they do not become a danger to cars and pedestrians. If your branches are in the street they are the property owners responsibility to remove.



Clearance at Intersections.

It shall be the responsibility of every owner of property in the Borough to keep trees, bushes, and shrubbery growing within the triangular fifteen (15) feet from the intersection of any two streets in the Borough of East Petersburg trimmed, so as to prevent such trees, bushes or shrubbery from obstructing the view of operators of vehicular traffic at such intersections. As stated in Section 2. of Ord. 284 property owners shall trim limbs or branches of trees or other foliage overhanging the roadway of any street or alley within the Borough so as to insure clearance of at least fifteen (15) feet.

Clearance Above Street and Sidewalk.

Every owner of property in the Borough shall be required to keep the limbs and branches of all trees growing upon such property or along the street, sidewalk, bicycle path, curb or alley abutting upon such property trimmed so that no part of such limbs or branches or of the foliage growing there upon, shall have a clearance of less than eight (8) feet above the surface of the sidewalk and bicycle path, or of less than fifteen (15) feet above the surface of the roadway of any street or alley below such limbs or branches.

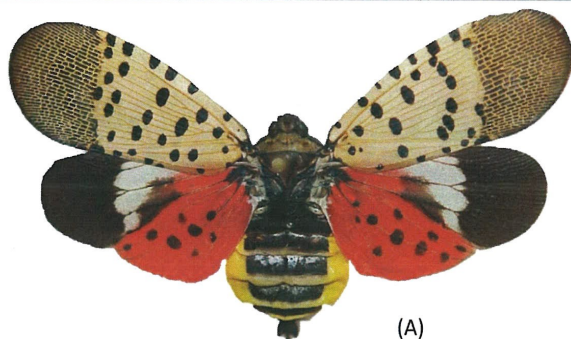


Removal of Dead, Dangerous, or Diseased Trees.

It shall be the responsibility of property owners in the Borough to remove any dead, dangerous, or diseased trees upon their property.



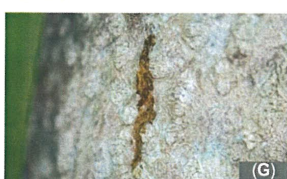
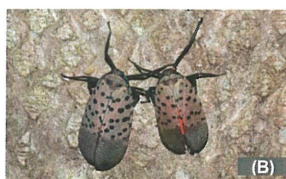
Pest Alert



Spotted Lanternfly

Lycorma delicatula (WHITE)
(Hemiptera: Fulgoridae)

The spotted lanternfly, *Lycorma delicatula* (White), an invasive planthopper, was first discovered on September 22, 2014 in eastern Berks County, Pennsylvania. It is native to China, India, Vietnam, and was unintentionally introduced to Korea where it has become a major pest. This insect prefers to attack tree of heaven, but it will feed on many other host plants including grapes, apples, stone fruits, and has the potential to greatly impact the grape, fruit tree, and forest products industries. Early detection is vital for the protection of Pennsylvania businesses and agriculture.



(A) Spotted lanternfly adult showing the forewings and hind wings (B) Adults at rest on bark (C) Lateral view of an adult (D) 1st instar nymph (E) 4th instar nymph (F) Adult feeding on wild grape, *Vitis* sp. (G) Weeping sap trail on bark (H) Egg mass (oothecum) covered in coating (I) Old hatched egg mass on tree trunk.

Identification:

The spotted lanternfly adult is approximately 1" long and 1/2" wide at rest. The forewing is gray with black spots and the wing tips are reticulated black blocks outlined in gray (A, B, C). The hind wings have contrasting patches of red and black with a white band (A). The legs and head are black; the abdomen is yellow with broad black bands. Young nymphs are black with white spots, and in the last (4th) instar develop red patches (D, E).

Hosts:

In the fall, adults congregate on tree of heaven (*Ailanthus altissima*), willows (*Salix* spp.), and other trees in groups of up to 20. Egg masses are laid on the trunk and branches of medium to large trees. After hatching in the spring, nymphs will move off the tree and search out new hosts, including several kinds of agricultural crops. In Korea, it has been reported to attack 65 different tree species, 25+ of which are known to grow in Pennsylvania.

Symptoms and Signs:

Trees, such as tree of heaven and willow, will develop weeping wounds. These wounds will leave a grayish or black trail along the trunk (G). This sap will attract other insects to feed, notably wasps and ants. In late fall, adults will lay egg masses on host trees and nearby smooth surfaces like stone, outdoor furniture, vehicles, and other structures. Newly laid egg masses have a gray mud-like covering that can take on a dry cracked appearance over time (H). Old egg masses appear as rows of 30-50 brownish seed-like deposits in 4-7 columns on the trunk, roughly an inch long (I).

What to do:

If you see egg masses, scrape them off, double bag them and throw them away. You can also place the eggs into alcohol or hand sanitizer to kill them. Please report all destroyed egg masses on our website listed below.

Collect a specimen: Specimens of any life stage may be submitted to the Pennsylvania Department of Agriculture's Entomology Lab for verification. Directions for submission are on the reverse side of this alert.

Take a picture: A photograph of any life stage (including egg masses) can be submitted to Badbug@pa.gov.

Report a site: If you can't take a specimen or photograph, call the Automated Invasive Species Report Line 1-866-253-7189 and leave a message detailing your sighting and contact information.



pennsylvania
DEPARTMENT OF AGRICULTURE

ENTOMOLOGY PROGRAM SAMPLE SUBMISSION FORM

*The Entomology Program at the Pennsylvania Department of Agriculture can provide identification.
Please complete this form to be submitted with the specimen(s).*

SPECIMEN COLLECTION REQUIREMENTS:

1. All specimens should be dead.
2. Most specimens should be placed in 70-80% ethyl or isopropyl alcohol in a leak proof vial.
(Moths, butterflies, and mealybugs should be frozen and placed in a hard plastic container with dry paper toweling)
3. The leak proof vial should be placed in a zip-style plastic bag.
4. Specimens from different locations (if applicable) should be placed in different vials.
5. A completed sample submission form must accompany the vial/container.

REQUIRED INFORMATION:

Name of Submitter: _____

Contact Information: Telephone: _____

Email: _____

Address Where Specimen Was Collected: _____

Date Collected: _____

Plant Host/Habitat: _____

Name of Person Who Collected Specimen: _____

Comments/Special Instruction: _____

Mail the vial/container and completed form or deliver in person to:

Pennsylvania Department of Agriculture
Entomology - Room 111
2301 North Cameron Street
Harrisburg, PA 17110

Contact: Sven-Erik Spichiger at 717-772-5229 or Lawrence Barringer at 717-772-5228