

# EAST PETERSBURG BOROUGH

Winter 2021/2022 *Town Crier*

[www.eastpetersburgborough.org](http://www.eastpetersburgborough.org)

## INSIDE THIS ISSUE:

Mayor's Note	Cover
Borough Events	Page 2
Be Water Wise	Page 3
NLCRPD Updates/Soliciting	Page 4
Snow Maintenance	Page 5
Snow Emergencies	Page 6
Trash/Recycling Reminders	Page 7
2022 Wate/Trash Rates	Page 8
2022 Trash/Recycling Dates & HHW info.	Page 9

## COUNCIL MEMBERS

John Wolf, President  
Debra Miller, Vice-President  
Adam Gochnauer, Member  
Lauren Houck, Member  
John Herr, Member  
Randy Rannels, Member  
John Schick, Member  
James A. Malone, Mayor  
Karen St. Clair, Manager

## MEETING DATES

**Borough Council Meeting**  
1st Tuesday of the month 7:00 p.m.

**Planning Commission**  
3rd Thursday as needed 7:00 p.m.

**Zoning Hearing Board**  
4th Wednesday as needed 7:00 p.m.

**Committee Meeting**  
4th Thursday of the month Jan.—Oct.

**EAST PETERSBURG  
BOROUGH OFFICE**  
6040 Main Street  
East Petersburg, PA 17520  
717-569-9282  
**Office Hours**  
8:00AM-4:30 PM  
Monday Thru Friday  
Closed for lunch 12:30-1:00



## MAYOR'S NOTE

As the seasons change, I find myself sharing with my family and neighbors in taking or planning "next steps". Loss of loved ones, children taking their next step in life, career or lifestyle, or we doing so ourselves, it all prompts changes in our immediate, short and long term planning.

As with most things in life, the lack of a goal, a plan or the failure to regularly reevaluate both in relation to where we currently are and where we want to end up, is often a disaster.

Thankfully, having goals, plans, and regular reevaluations makes the common chaos of life easier to adjust to. Our life and lifestyle is changing. The change itself is neither a "good" or "bad", it is just a change.

I want to thank each of you who has chosen to take an active positive role in helping East Petersburg Borough develop and evaluate its goals and plans. We will always have a lot to do and differing opinions on the best course of action to resolve a given issue. It is important to remember what our purpose is and work together to achieve it.

In that regard, I want to thank those in East Petersburg Borough who chose to vote for granting me another four year term to work with and for our borough as mayor. I also want to congratulate John Schick, Randy Rannels and Sandra Valdez for being chosen by the same lot to serve on borough council for the 2022 - 2025 cycle. All three are intelligent, capable, caring individuals with knowledge, experience and wisdom that has and will be a great asset to the borough.

As we track through winter, closing out 2021 and starting 2022, we know a lot of our current situation will continue. Acknowledging this, please keep one another in mind. Our lives are worth living. We prove that by doing what we can to positively impact the world around us starting with our families and our communities.

Knowing this, I wish you well and whatever your winter celebrations are, I hope you find safe and healthy ways to celebrate them with your families.

- Happy Hanukkah (Nov. 28 - Dec. 6)
- Blessed Winter Solstice (Dec. 21)
- Merry Christmas (Dec. 25)
- Good Kwanzaa (Dec. 26 - Jan 1)
- Whatever I missed - Enjoy!

Finally, I know everyone is adjusting to a lot more than we ever expected to this time last year.

If you are in need of resources or guidance on helping or getting help within the borough, let us know or visit the borough website at <https://www.eastpetersburgborough.org/>

I know it is difficult for many to be open about their lives and struggles. If you are struggling, free and confidential support is available to listen. 800-273-8255 Life is pain. Anyone who says otherwise is selling something. It does, too, have its moments of happiness and joy.

I truly hope you are well and that I have an opportunity to speak with you soon.

James Andrew Malone, Mayor  
East Petersburg Borough  
voicemail 717-569-9282 ext. 50  
email [mayor@eastpetersburgborough.org](mailto:mayor@eastpetersburgborough.org)





# BOROUGH EVENTS

For more information and updates on events

go to:

<http://www.eastpetersburgday.com/> &  
Facebook page East Petersburg Day



**CANCELLED** - Santa in the Park has been cancelled this year

**CANCELLED** - New Year's Eve at East Petersburg Borough Community Park has been cancelled this year

**January 8** - Tree Chipping Event at East Petersburg Community Park in the parking lot 8:00 a.m. until 2:00 p.m. You can drop your tree off during the event or you can sign up at the Borough office to have it picked up by the Boy Scouts the day of the event (donation requested).



*Looking Ahead...*

**May 7, 2022** - Car Show

**June 4, 2022** - Community Yard Sale



## Be Water Wise

The average Pennsylvanian uses about **62** gallons of water a day at a cost of about **30 cents** a day:



### 20+ gallons a day flushing the toilet.

Install a low-flow toilet, reducing each flush to 1.6 gallons a flush or about 8 gallons of water per person, per day on average.

Put a gallon plastic jug of water or a commercial dam to cut down on the amount of water needed for each flush.



### 4 gallons each time you brush your teeth.

Turn off the water while brushing your teeth.



### 3+ gallons per minute when showering (the average shower lasts 8 minutes totaling 24 gallons).

Take shorter showers.

Install a low-flow shower head.



### 12 gallons for washing your hands, drinking or other activities.

Turn the water off while lathering your hands.



### 12 gallons per load (the average home uses the dishwasher 5 times a week totaling 60 gallons).

Run the dishwasher only when you have a full load.

Water-efficient dishwashers use about 7 gallons of water totaling 35 gallons a week.



### 50 gallons per load (the average home does 7 loads a week totaling 350 gallons).

Wash clothes only when you have a full load or be sure the setting reflects the size of the load.

Front load washers use about 27 gallons per load totaling 189 gallons.



### The average home loses about 10 gallons of water per person a day.



### A faucet that drips once every second wastes about 10 gallons of water a day.



### Watering the lawn takes about 180 gallons of water.

30 percent of the water used on the East Coast goes to watering lawns.



### Water used in washing the car:

At home in driveway - 116 gallons;  
Self-serve car wash - 16.2 gallons; and  
Average automatic car wash - about 38 gallons.





## NLCRPD ASKS BUSINESSES & RESIDENTS TO REGISTER THEIR SECURITY CAMERAS



In an effort to better collaborate with the community, the Northern Lancaster County Regional Police Department is asking all businesses and residents with surveillance camera systems to register with the Police Department. Access to video following a crime can be the difference in solving the crime or not! To register your camera with the NLCRPD.

[Camera Registry | Northern Lancaster County Regional Police Department \(crimewatchpa.com\)](https://www.crimewatchpa.com)

### NEW CONTACT OPTIONS FOR NON-EMERGENCY CONCERNS:

The NLCRPD has updated the way our citizens can contact the Police Department by creating "webforms" for automatic submission. This is a great way to report NON-Emergency information to the Police Department, of (Example: Parking Complaints).

[Online Reporting | Northern Lancaster County Regional Police Department \(crimewatchpa.com\)](https://www.crimewatchpa.com)

**Soliciting or Selling door to door in the Borough:** It is unlawful for any individual or business to solicit house to house in the Borough without first obtaining a permit from the Northern Lancaster County Regional Police Dept.



The person soliciting should carry their permit with them at all times while soliciting in the Borough. You can find current solicitation permits on the borough website click [here](#). If you see suspicious door to door sales or have a question about a door to door solicitation please contact the Northern Lancaster County Regional Police Department non-emergency number at 717-664-1180 asap, while they are in the area. If you have any further questions about this please contact the borough office 717-569-9282.

Information on starting a neighborhood watch: <https://www.staysafe.org/starting-and-growing-a-neighborhood-watch/>



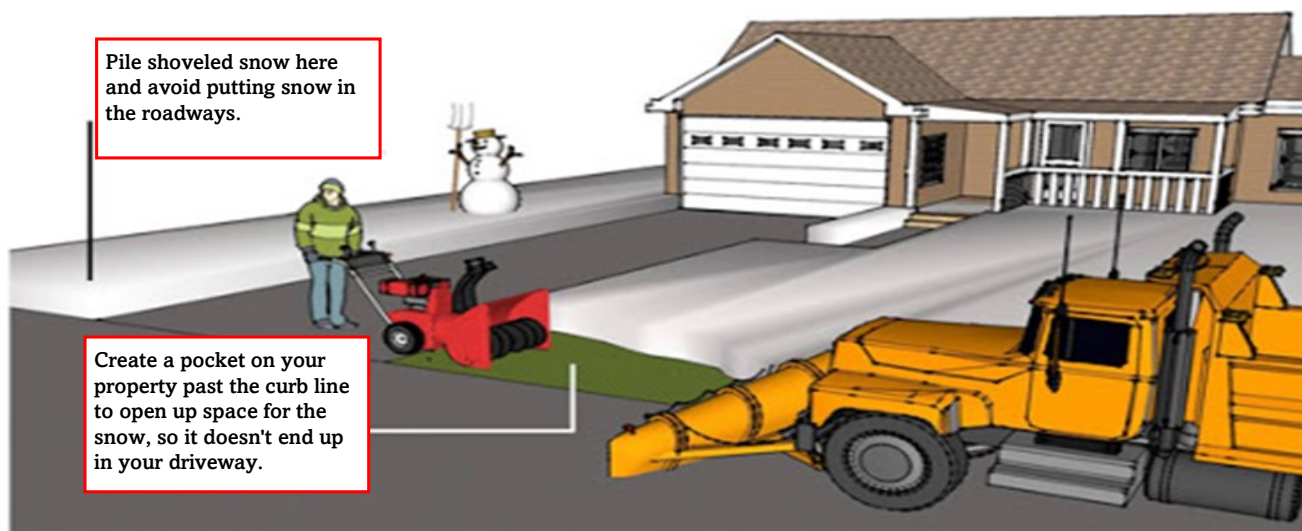
# Snow Maintenance

When your roadway is being plowed, you will see a plow pass in front of your home at least twice in both directions. The second pass is what we refer to as a widening out. What this means is we will push then snow back from curb to curb or edge of cartway to edge of cartway. This will allow us to push more snow if we would happen to get another storm. So please don't shovel your driveway until you see that your street has been plowed curb to curb. By doing this you will avoid having to clean your driveway more than once. If possible, park your vehicles in your driveway during a snowstorm. This will help us push the snow back to open the cartway from curb to curb or edge of the cart way.

- \* Property owners are required to remove and clear away any snow and/or ice from sidewalks abutting their properties within twelve (12) hours after the finishing of any snow, sleet, or freezing rain event.
- \* At all times during and after any snow storm, it shall be prohibited for any person to shovel, push, throw, or plow snow from a sidewalk, driveway, lot, or any other area on any Borough public street.
- \* If any sidewalk is not cleared of snow and/or ice in accordance to the provisions, residents may complete a complaint form that can be found online or at the Borough office.

For information on making an emergency plan for your home, vehicle and workplace go to: <https://www.penndot.gov/TravelInPA/Winter/Pages/Winter-Preparation>

**TO KEEP SNOW OUT OF YOUR DRIVEWAY, WE RECOMMEND THE FOLLOWING:**





# Snow Emergencies

Remember to move your car if a snow emergency is declared on the streets listed below. Failure to do so could result in fines or the owners vehicle being towed.

If the Borough declares a snow emergency, information will be given on the local TV news channels and on the website. More information on the snow emergency ordinance can be found at [www.eastpetersburgborough.org](http://www.eastpetersburgborough.org)

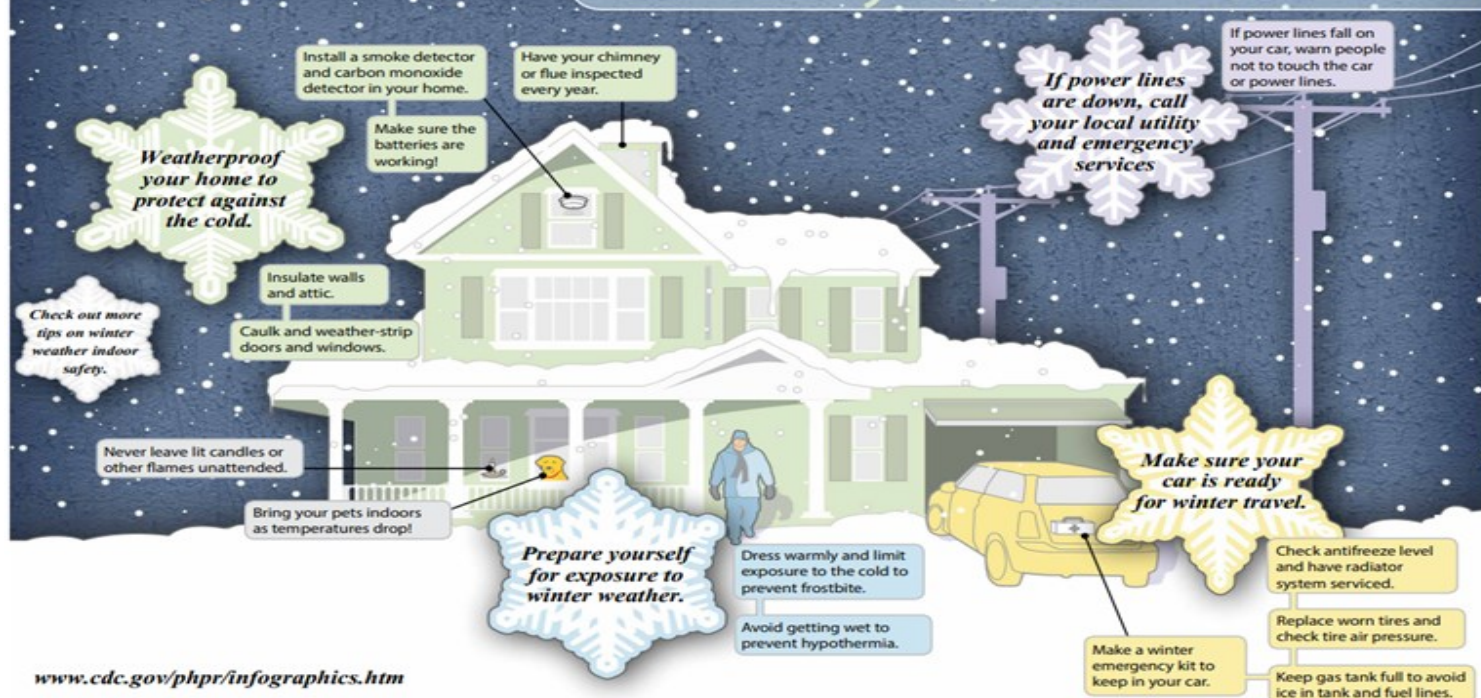
Valley Road, Stevens Street ,  
Northfield Drive, Morris Drive,  
Hollow Drive, Broad Street,  
New Street, Madison Court,  
Franklin Drive, Olde Meadow Court,  
Caroline Drive,  
Linden Street (North side only)

Please Note: Parking is available at the pool parking lot and at the parking lot on Hollow Drive near the basketball courts.



Your patience and cooperation is appreciated as we do our best to stay on top of the changing road conditions. Please stay clear of the plows as they work to keep the roadways safe and clear to allow emergency vehicles to get to where help is needed.

## Be Ready! Winter Weather



For information on making an emergency plan for your home, vehicle and workplace go to:

<https://www.penndot.gov/TravelInPA/Winter/Pages/Winter-Preparation>

<https://www.cdc.gov/disasters/winter/index.html>



## Leaf pick-up dates



**November 27**  
**December 10**

**REMEMBER: DO NOT RAKE LEAVES INTO THE STREET** This could block stormwater drains. In accordance with Ordinance #169 you could be fined for this. Please dispose of leaves by placing them into a brown leaf bag.

All Borough residents are required to recycle leaves. If you put them into the trash they will not be collected. Leaf bags should not be placed at the curb more than 12 hours prior to pick-up. Please keep all items for collection out of the cartway.

## Change to trash schedule:

Saturday, November 27,  
due to the holiday

Extra trash is often accumulated over the holidays, you can purchase extra trash tags for \$1.25 at the borough office for anything over the allotted amount of 3-32 gallon trash bags or cans. Any extra corrugated cardboard that does not fit into your bin can be disposed of in the dumpster located at the Community Park parking lot.

## Christmas Tree Removal



If you are not participating in the tree chipping event on January 8th (see page 2 for details), you will need to have an oversized item tag attached to your tree to have it collected by the trash hauler on any regular trash pick-up day.

## Commercial Recycling Reports

The annual recycling report will be mailed to businesses in December. All businesses, excluding home based businesses, must complete and return the report by January 31, 2022.

# Don't Forget: Recycle Right, Every Day.



**RECYCLE RIGHT** Lancaster ✓

[recyclerightlancaster.org](http://recyclerightlancaster.org)



## **EAST PETERSBURG BOROUGH WATER DEPARTMENT** **RATES FOR 2022**

East Petersburg Borough adopted the following increase for **trash rates** effective January 1, 2022. \$258.00/year, billed quarterly with water bills.

East Petersburg Borough water rates will remain the same for 2022.

### **Section 1—Residential, Commercial, and Industrial Rates.**

First 5,000 Gallons per quarter with 3/4" meter	\$72.70
First 20,000 Gallons per quarter with 1" meter	\$290.60
First 30,000 Gallons per quarter with 1-1/2" meter	\$523.19
First 50,000 Gallons per quarter with 2" meter	\$872.01
First 100,000 Gallons per quarter with 3" meter	\$1,453.05
First 100,000 Gallons per quarter with 4" meter	\$1,606.99

All above minimum gallons per quarter per 1,000 gallons  
Or any part thereof per quarter

\$6.50



# 2022 Trash and Recycling

## **RECYCLING & TRASH CHANGES**

SATURDAY, JUNE 4  
 SATURDAY, JULY 9  
 SATURDAY, SEPTEMBER 10  
 SATURDAY, NOVEMBER 26

## **LARGE APPLIANCE AND TIRE PICK-UP**

APRIL 29  
 OCTOBER 28

## **THE FOLLOWING ITEMS ARE SOLD AT THE BOROUGH OFFICE**

\$ .50 - YARD WASTE/LEAF BAGS  
 \$ 1.25 - TAGS FOR EXTRA BAGS OF TRASH (ANYTHING OVER 3 - 32 GAL)  
 \$ 2.00 - TAGS FOR GRASS  
 \$ 5.00 - TIRE TAG  
 \$ 15.00 - APPLIANCE TAG  
 \$ 10.00 - RECYCLING BINS

## **YARD WASTE PICK-UP**

APRIL 1  
 APRIL 15  
 APRIL 29  
 MAY 13  
 MAY 27  
 JUNE 10  
 JUNE 24  
 JULY 9  
 JULY 22  
 AUGUST 5  
 AUGUST 19  
 SEPTEMBER 2  
 SEPTEMBER 16  
 SEPTEMBER 30  
 OCTOBER 14

## **LEAF PICK-UP**

OCTOBER 28  
 NOVEMBER 11  
 NOVEMBER 26  
 DECEMBER 9

**Please Remember:** Do not put items out earlier than 5:00 p.m. the evening before scheduled pick-up. All items should be kept out of the right-of-way. Containers must be picked up no more than 24 hours after collection.

## **ITEMS TO BE PUT INTO THE RECYCLING BIN**

- Plastic jugs and bottles with a neck
- Glass bottles and jars includes - clear, green and brown
- Cans - includes food and beverage cans made from aluminum or tin
- Corrugated cardboard-flattened (there is a dumpster at the Community Center for cardboard that does not fit into your bin)

**REMOVE LIDS (PUT THEM INTO THE TRASH), ITEMS MUST BE EMPTIED AND RINSED, FLATTEN CARDBOARD, ALL ITEMS BEING RECYCLED SHOULD BE PLACED INTO BINS. HEAVIER ITEMS SHOULD BE ON TOP. NO OTHER MATERIALS THAN LISTED.**

**NO PLASTIC BAGS IN THE RECYCLING BINS and**  
**NO RECYCLING IN PLASTIC BAGS**  
**When in doubt throw it out!**

Lancaster County Residents can dispose of Household Hazardous Waste (HHW) for FREE at LCSWMA's HHW Facility located at 1299 Harrisburg Pike, Lancaster, PA. M-F 7am—4pm and Sat. 8-11am. These items may include, but not limited to: electronics / tv's. paint, batteries, cleaning products, chemicals and more. For a complete list go to [www.lcsma.org](http://www.lcsma.org) or call 717-397-9968.