

EAST PETERSBURG BOROUGH

Winter 2023

Town Crier

www.eastpetersburgborough.org

INSIDE THIS ISSUE:

- Borough Events
- Stormwater Webinars
- Holiday Trash Schedule
- Snow Squall Awareness
- Solicitation Guidelines & Suggestions for Residents
- Message from Chief Kilgore
- Historical Society Archive Museum
- Park Grant Update
- 2024 Trash/Recycling
- Rechargeable Battery Disposal
- Water Department Updates



MAYOR'S NOTE

Hello Neighbor!

Autumn and Winter are upon us again.

I hope you will have an opportunity to gather with friends and family this season.

I wish you well and whatever your winter celebrations are, I hope you find safe and healthy ways to celebrate them with your families.

Happy Hanukkah (Dec. 7 - Dec. 15)

Blessed Winter Solstice (Dec. 21)

Merry Christmas (Dec. 25)

Good Kwanzaa (Dec. 26 - Jan. 1)

Happy New Year (Dec. 31 - Jan. 1)

Whatever I missed - Enjoy!

If you need resources or guidance on helping or getting help within the borough, let us know or visit the borough website at <https://www.eastpetersburgborough.org/>

I know it is difficult for many to be open about their lives and struggles. If you are struggling, free and confidential support is available to listen. 800-273-8255

I wish you peace, comfort, and dignity this winter season and I hope we will see you taking an active role in our borough to ensure the same for our neighbors.

I truly hope you are well and that I have an opportunity to speak with you soon.

James Andrew Malone, Mayor
East Petersburg Borough
email majord@eastpetersburgborough.org
voice mail 717-569-9282 ext. 50

EAST PETERSBURG
BOROUGH OFFICE
6076 Pine Street, Suite A
East Petersburg, PA 17520
717-569-9282

Office Hours

7:30 AM-4:00 PM
Monday Thru Friday

Council Members

Debra Miller, President
John Schick, Vice President
Adam Gochnauer, Member
John Herr, Member
Randy Rannels, Member
William Sharp, Member
Sandra Valdez, Member
James A. Malone, Mayor
Karen St. Clair, Manager

Meeting Dates

Borough Council Meeting
1st Tuesday of the month 7:00 p.m.

Planning Commission
3rd Thursday as needed 7:00 p.m.

Zoning Hearing Board
4th Wednesday as needed 7:00 p.m.

Committee Meeting
4th Thursday of the month Jan.—Oct.



BOROUGH EVENTS

For more information and updates on events go to:
<http://www.eastpetersburgday.com/> & Facebook page East Petersburg Day

December 9

SANTA IN THE PARK

9:00 a.m. - 12:00 p.m. and 1:00 p.m. - 4:00 p.m.
Visit Santa and bring your camera to take a photo.
There is no charge for this event.

There will be Cookies for the kids at Mrs. Claus' Kitchen, a model train table, a dollhouse display, and Reindeer food bar for kids to put together treats for Santa's Reindeer. This event is held at the Community Center located at 6051 Pine Street



January 6

TREE CHIP

8:00 a.m. - 2:00 p.m.
Held by East Pete Boy Scout Troup #33 at
East Pete Community Park in the parking lot -
6051 Pine Street.

Sign up at the borough office to have your tree picked
up curbside by the Boy Scouts the day of the event or
you can drop it off at the park the day of the event.
Donations will be accepted.



Looking ahead.....

Car show - May 4

Community Yard Sale & Chicken BBQ - June 1



Penn State Extension has released a series of webinars related to residential storm water. There is no charge, but sign up is required. For more information, or to sign up go to: view.extension.psu.edu



Use and Benefits of Rain Barrels

Join us for a discussion on the uses and advantages of rain barrels for homeowners and provide information on a basic DIY rain barrel construction method.

November 16, 2023 (12:00 PM-1:00 PM ET)



Rain Gardens - A Stormwater Slam Dunk

Join us for this webinar, which will educate participants on the benefits, design, and maintenance of rain gardens, a crucial stormwater management feature.

November 21, 2023 (12:00 PM-1:00 PM ET)



Backyard Meadows

Join our informative webinar on the advantages and fundamental aspects of installing and maintaining a backyard meadow. Learn to assess whether a meadow is a viable option for your property, regardless of its size.

November 28, 2023 (12:00 PM-1:00 PM ET)



Stormwater-Friendly Lawn Care Strategies

This session will encompass various topics, such as downsizing your lawn, optimizing fertilizer use, effective mowing techniques, preventing soil compaction, and managing pests effectively.

November 30, 2023 (12:00 PM-1:00 PM ET)



Holiday Trash Schedule



There are two changes due to the holidays this year:

Saturday, November 25

Saturday, December 30

All other pick ups will fall on Fridays for the rest of 2023.

Reminder:

Extra bags of trash need tags, and anything that will not fit into a trash bag is considered oversized and will need a tag.

Leaf Pick-up Dates

The remaining leaf pickup dates for 2023 are:

December 1

December 15



All leaves must be put into the brown leaf bags and put at the curb no sooner than 24 hours prior to collection.

Please keep all items for collection out of the cartway.



Pennsylvania's Snow Squall Awareness Week is November 13-17, 2023.

When you think of winter weather hazards, what comes to mind? Do you think of big snow storms that drop a significant amount of snow? Do you think of ice storms that cover trees, powerlines, and roadways in a glaze of ice? Or maybe you think of flooding that can occur when a storm drops heavy rain on top of melting snow, overwhelming creeks, streams, and rivers with water.

Pennsylvania sees many forms of hazardous winter weather, including snow squalls. A snow squall is a brief but intense period of heavy snow (up to 2 inches in 30 minutes), strong winds (30+ mph), and whiteout conditions (visibility less than $\frac{1}{4}$ mile). Snow squalls often occur on days with otherwise partly cloudy skies. Coming on so suddenly, snow squalls can catch drivers off guard and lead to major transportation impacts, including deadly multi-vehicle accidents.

One of the things that makes snow squalls so dangerous is their tendency to produce icy roadways. Since snow squalls usually occur on days with partly cloudy skies, road surface temperatures can start off well above the freezing point before snow squalls arrive. When the snowflakes start to fall, they initially melt on the warm road surface, making the road wet. However, as the snow becomes heavier and air temperatures fall, the road surface cools and liquid water turns to ice. Ice can also form on road surfaces that start out below freezing, especially when moving traffic drives over fallen snow, packing it down and warming it just enough to become icy.

The National Weather Service uses several tools to predict and detect snow squalls. First, forecasters analyze weather model simulations and apply the latest forecast methods to diagnose setups that are favorable for the development of snow squalls. When snow squalls are anticipated, the NWS gets the word out through forecast discussions, social media, and special weather statements. The National Weather Service briefs partners, including PennDOT, PEMA, and many others, including public safety and emergency management officials. Broadcast meteorologists also do a great job in getting the forecast out to the public.

As the snow squalls begin to develop, the NWS uses Weather Surveillance Radar and high-resolution satellite imagery to monitor their intensity and track their movement. The NWS also monitors ground-based weather observations from the Pennsylvania State Mesonet and the PennDOT Road Weather network. All of these instruments measure temperature, wind speed, and precipitation rate, and many of them also measure visibility and road surface temperature. SKYWARN observers also notify the NWS when they observe snow squalls.

In 2018, the National Weather Service began issuing Snow Squall Warnings to alert for the sudden onset of life-threatening conditions encountered by highway travelers during snow squalls. The warnings are "short-fused," only issued for up to about 1 hour, and are designed to be acted upon immediately. To make sure that the public receives them, these warnings activate the Wireless Emergency Alert system and will push audible alert notifications to smartphones.

If you are driving on an interstate when a Snow Squall Warning is issued, the best thing to do is to exit the roadway at the next opportunity. If you do get caught driving in a snow squall, avoid slamming on your brakes, turn on your headlights and hazard lights, stay in your lane, and increase your following distance. Before you get on the road this winter, make sure you are weather-aware. Check the NWS forecasts at weather.gov and on social media. If a snow squall warning is issued by the National Weather Service, delay travel until after the snow squall moves through. Use the 511 PA App or visit 511pa.com to check the latest traffic conditions, traffic speeds, and live camera images. For more, visit www.weather.gov/ctp/snowsquall.



INFORMATION FOR EAST PETERSBURG RESIDENTS - Door to Door Solicitors and Peddlers

East Petersburg Borough frequently receives inquiries regarding persons going door to door and soliciting. Please review the following information about our solicitation guidelines and some suggestions for interacting with solicitors.

Solicitors within East Petersburg Borough must apply for and be approved for a license to solicit in the Borough in accordance with the Borough's Soliciting Ordinance.

Political canvassing, religious proselytizing, and distributing handbills are activities that do not require a license and are permitted by law.

Per the East Petersburg Borough Ordinance, solicitors must adhere to the following guidelines and rules regulating door-to-door solicitation:

- Must cease solicitation upon owner or occupant request
- Must obey posted "No Soliciting" and "No Trespassing" signs
- Must carry and display their license while they are soliciting
- May only solicit between the hours of 9:00 A.M. and 6:00 P.M.



If a solicitor does not display and cannot produce a license, they may not be licensed to solicit within East Petersburg Borough and may be reported to the Northern Lancaster County Regional Police Department:

Northern Lancaster County Regional Police Office **717-733-0965**

Northern Lancaster County Regional Police Dispatch **Emergencies - 911**
Non-Emergencies - 717-664-1180

East Petersburg Borough maintains a list of current soliciting license holders on its website, which residents can reference.

Pushy, rude, or aggressive solicitors

Beyond the restrictions listed above, the Borough of East Petersburg does not directly regulate the demeanor of individual solicitors. Remember however, that **as a homeowner or occupant you may at any time ask a solicitor to leave your property**. Every resident has the right to feel secure in their home, should you feel threatened or unsafe based upon a solicitor's behavior, contact the Police immediately.

How to Prevent Solicitors At Your Home

Prominently display a "No Soliciting" or "No Trespassing" notice on your property. Signs should be of a size that is easily visible to Solicitors who may approach your front door or main entrance.

It is illegal in East Petersburg Borough to solicit at a location where proper No Soliciting or No Trespassing signage has been posted. With or without a sign, residents should not ever be afraid to exercise boundaries with solicitors by refusing to answer their door or by politely stating 'no thank you' or 'not interested' and shutting and locking their door.

Constitutional Rights of Solicitors

The First Amendment and the U.S. Constitution protect the rights of door-to-door solicitors and preclude the ability of a community to ban or significantly limit door-to-door sales. The U.S. Supreme Court has upheld free speech for commercial purposes, and the Borough's ability to restrict commercial door-to-door solicitation is limited to local regulations restricting the time, place, and manner of door-to-door solicitations. Homeowners and occupants, however, do have the ultimate right to determine whether solicitors shall or shall not be invited to their residences or property.



MESSAGE FROM CHIEF KILGORE

In these times of instant information and advancements in technology, it is imperative that we maintain a forum to share information between the police and those communities we serve. Through communication technologies, such as Crimewatch, we can evaluate community needs, deploy resources, maximize operational planning methods and strategies, and maintain an open line of communication with our community. Regional policing focuses on avoiding the duplicate or overlapping costs of traditional policing. Through continued analysis, data-driven resources, and forward-thinking and research and planning; Regional policing maximizes resources, consistently seeks partnerships to increase agency capabilities, and focuses on both career development and opportunity for employees.

Regional policing demands the highest quality of service from its members, and we are honored to be part of a profession with a noble mission and purpose to serve others. At the NLCRPD It is our mission, through inter-governmental cooperation and problem-solving, to provide the highest quality of professional policing to our community. We pledge to hold each other accountable to the highest of standards established since our inception and will continue to maintain our core values and pursue excellence both today and in the future.

As a lifelong resident of Lancaster County, I am truly honored and humbled to serve both the communities of the NLCRPD and the officers who police them. Grounded on the principles of leadership and teamwork, the NLCRPD shall maintain the highest level of integrity, professionalism, and service. Our mission shall not be deterred by adversity. We are blessed to have a supportive community and together we will continue to forge relationships, build trust, and make our community a safer place to live.

Chief Josh Kilgore

Sourced via CRIMEWATCH®: <https://lancaster.crimewatchpa.com/nlcrpd/8795/slideshows/welcome-message-chief-kilgore>



East Petersburg Borough Community Park Upgrade Renovations Project

East Petersburg Borough submitted a DCNR Playground and Recreation grant application for the renovation of our Community Park at 6051 Pine Street in March of 2023. The project will rehabilitate the park playground equipment, restrooms, and construct an ADA compliant pathway that interconnects the recreation area. The Community Park currently has out-of-date, unsafe wooden playground equipment that will be replaced with ADA-compliant equipment. The project will upgrade the playground equipment and establish an inclusive pathway throughout the park. In addition, to make the recreation area and restrooms accessible, the Borough will be replacing the current aging sidewalks connecting the pathway to the parking lot. The proposed plan also includes expanding the bathroom facilities, to construct a new ADA-restroom facility that is accessible for all park goers to use. The Community Park Grant Project we applied for is through the DCNR, C2P2 Playground and Recreation Development Grant. Plan details are available at the Borough Office.

PARK GRANT UPDATE A cartoon thumbs up emoji with a smiling face.

Update on the Community Park Grant Application:

East Petersburg Borough was awarded the C2P2 grant in the amount of \$250,000 from the Community Conservation Partnerships Program administered by the Department of Conservation and Natural Resources (DCNR).

Funding for projects comes from a variety of sources including the state Keystone Recreation, Park and Conservation Fund, Environmental Stewardship Fund, ATV and Snowmobile Management Restricted Accounts, and Pennsylvania Heritage Area Program, and the federal Land and Water Conservation Fund and Recreational Trails Program.

Upgrades will begin sometime in 2024. Dates to be determined.



The East Petersburg Historical Society's (EPHS) archive museum located at the Daniel Wolf House 1905 State Street, East Petersburg, Pa, 17520 is open to the public the first Saturday of every month throughout the year. The hours of operation are 9:00 a.m. to 12:00 p.m.

On Saturday, December 2, 2023, 5:00 pm to 9:00 pm the East Petersburg Historical Society will sponsor a special Christmas open house, open to the public, in the Daniel Wolf House decorated for the holiday.

Included will be free refreshments, electric train display, silent auction, music, East Petersburg artifacts, documents and historic photographs on display.

You can find Christmas gifts at the gift shop. Wooden replicas of local historical buildings, artwork by Dorothy Hollinger, old calendars with historic photographs, fracturs, tee shirts, and East Petersburg Afghans are available for sale.

Please join us to celebrate the holiday and view the artifacts and discuss East Petersburg History.

Additional parking will be available at the Real Life church across Lemon Street from the Daniel Wolf House.

In addition, The East Petersburg Historical Society are planning interesting Programs for our monthly meetings for the year 2024.

We are in need of people whom have lived the history of East Petersburg—those who are willing to share their interesting stories of past experiences, past public events and their knowledge of the East Petersburg Borough.

If you are willing, or are aware of anyone who is willing and able to become a program speaker, please inform us on the EPHS Facebook page or the Web site at eastpetehistory.org.



2024 Trash Recycling

RECYCLING & TRASH CHANGES

SATURDAY, JANUARY 6
 SATURDAY, JUNE 1
 SATURDAY, JULY 6
 SATURDAY, SEPTEMBER 7
 SATURDAY, NOVEMBER 30
 SATURDAY, DECEMBER 28

LARGE APPLIANCE AND TIRE PICK-UP

APRIL 26
 OCTOBER 25

THE FOLLOWING ITEMS ARE SOLD AT THE BOROUGH OFFICE

\$.55 - YARD WASTE/LEAF BAGS
 \$ 1.25 - TAGS FOR EXTRA BAGS OF TRASH (ANYTHING OVER 3 - 32 GAL)
 \$ 2.00 - TAGS FOR GRASS
 \$ 5.00 - TIRE TAG
 \$ 19.00 - APPLIANCE TAG
 \$ 13.00 - RECYCLING BINS

YARD WASTE PICK-UP

APRIL 5
 APRIL 19
 MAY 3
 MAY 17
 JUNE 1
 JUNE 14
 JUNE 28
 JULY 12
 JULY 26
 AUGUST 9
 AUGUST 23
 SEPTEMBER 7
 SEPTEMBER 20
 OCTOBER 4
 OCTOBER 18

LEAF PICK-UP

NOVEMBER 1
 NOVEMBER 15
 NOVEMBER 30
 DECEMBER 13

PUT THESE ITEMS IN THE RECYCLING BIN:

- Plastic jugs and bottles with a neck
- Glass bottles and jars includes - clear, green and brown
- Cans - includes food and beverage cans made from aluminum or tin
- Corrugated cardboard-flattened (there is a dumpster at the Community Center for cardboard that does not fit into your bin)

REMOVE LIDS (PUT THEM INTO THE TRASH), ITEMS MUST BE EMPTIED AND RINSED, FLATTEN CARDBOARD, ALL ITEMS BEING RECYCLED SHOULD BE PLACED INTO BINS. HEAVIER ITEMS SHOULD BE ON TOP. NO OTHER MATERIALS THAN LISTED.

NO PLASTIC BAGS IN THE RECYCLING BINS and
NO RECYCLING IN PLASTIC BAGS
When in doubt throw it out!

Please Remember: Do not place items at the curb earlier than 24 hours prior to scheduled pick-up. All items should be kept out of the right-of-way. Containers must be removed from the curb no more than 24 hours after collection.

Household Hazardous Waste (HHW) - Lancaster County Residents can dispose of HHW for FREE at LCSWMA's HHW Facility located at 1299 Harrisburg Pike, Lancaster, PA. M-F 7a.m.- 4p.m. and Sat. 7 a.m.- 11a.m. These items include, but not limited to: electronics / tv's. paint, batteries, cleaning products, chemicals and more. For a complete list go to www.lcsma.org or call 717-397-9968.

GOOD'S DISPOSAL SERVICE WILL CONTINUE TO SERVICE THE BOROUGH IN 2024.

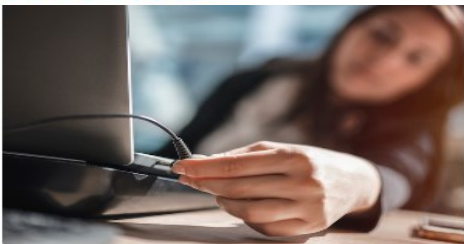
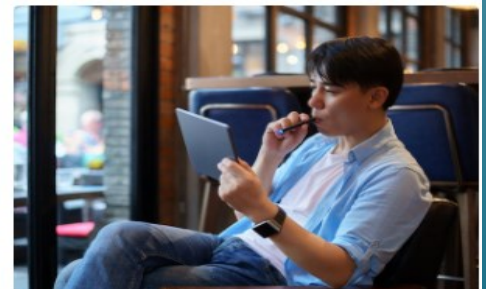



Rechargeable batteries are causing fires

Keep all batteries out of trash and recycling

For safe disposal <https://www.lcswma.org/resources/safe-battery-disposal/>

LCSWMA

**POWER TOOLS****TOYS****CELLPHONES****LAPTOPS****WATCHES****REMOTE CONTROLS****GAMING DEVICES****ELECTRIC TOOTHBRUSHES****E-CIGARETTE AND VAPE DEVICES**




**SAVE
WATER**
 every drop
COUNTS!

We are happy to announce that our water replacement project is near completion. All water meters were replaced with the iPERL water meters. These meters have been proven to be more efficient and give more accurate readings. If you suspect you have a leak in your home, you can use the water meter to help detect if you do in fact have a leak.

Using your Sensus iPERL water meter to detect a leak

Your Sensus iPERL™ water meter is equipped with a digital LCD register. A plus sign (+) means water is flowing through the meter.

If you suspect you have a leak, take the following steps:

1. Write down the meter reading
2. Turn off all the water fixtures and appliances
3. Write down the reading again on the meter
4. Wait approximately 15 minutes
5. Look at the flow indicator, does the plus sign (+) disappear or remain:
 - A. If the plus sign (+) disappears then the flow of water through the meter has stopped.
 - B. If the plus sign (+) remains then a fixture in your home is still using water or you have a leak in your service line between the meter and your home



EAST PETERSBURG BOROUGH WATER DEPARTMENT RATES FOR 2024

East Petersburg Borough adopted the following increase for trash rates effective January 1, 2024. \$292.00/year, billed quarterly with water bills.

East Petersburg Borough adopted the following increase for water rates effective January 1, 2024.

Section 1—Residential, Commercial, and Industrial Rates.

First 5,000 Gallons per quarter with 3/4" meter	\$77.13
First 20,000 Gallons per quarter with 1" meter	\$308.30
First 30,000 Gallons per quarter with 1-1/2" meter	\$555.06
First 50,000 Gallons per quarter with 2" meter	\$925.12
First 100,000 Gallons per quarter with 3" meter	\$1,541.54
First 100,000 Gallons per quarter with 4" meter	\$1,704.86

All above minimum gallons per quarter per 1,000 gallons Or any part thereof per quarter	\$6.90
--	--------